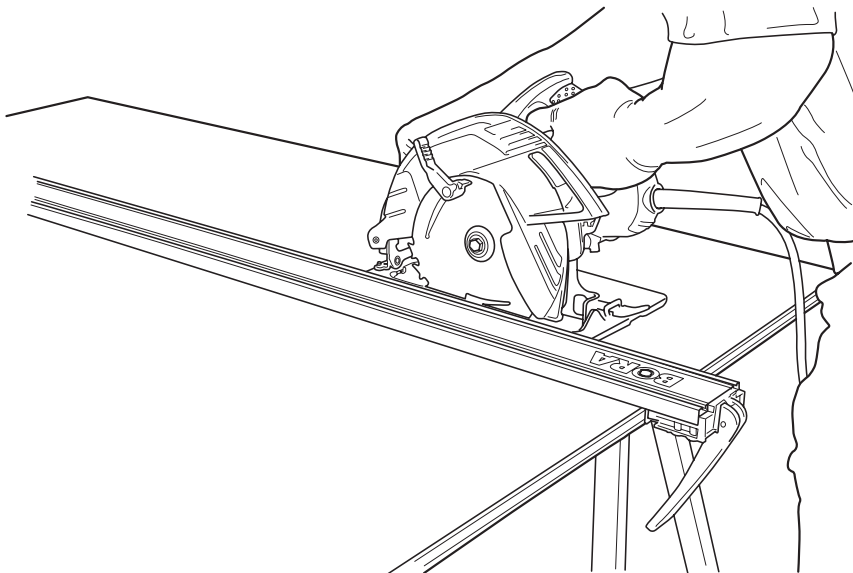


BORA[®]

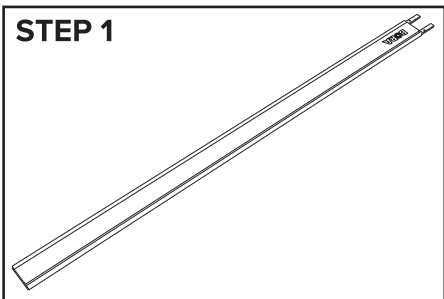
PORTAMATE

WTX CLAMP EDGE[™]



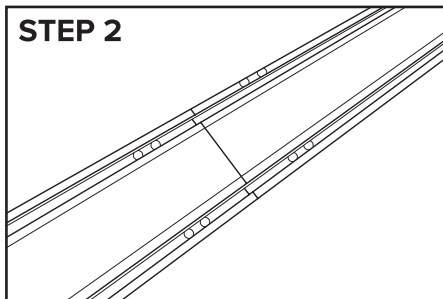
Instructions

STEP 1



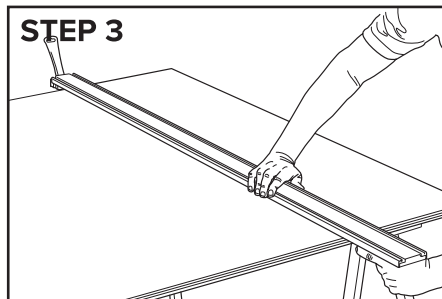
Remove the saw guide and extension from the pack and find a table or workbench to place them.

STEP 2



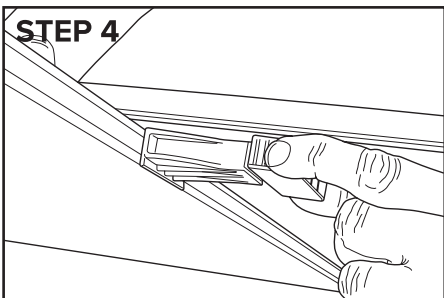
Connect the guide and the extension with the connectors supplied and tighten hardware.

STEP 3



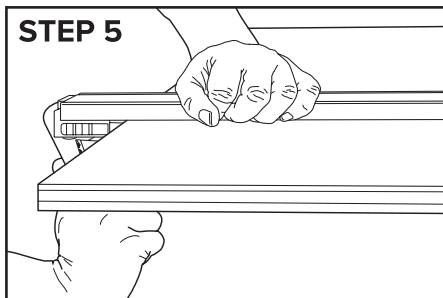
Move your guide to your work piece and pull the end clamp head so that it is 1" (25mm) wider than your material.

STEP 4



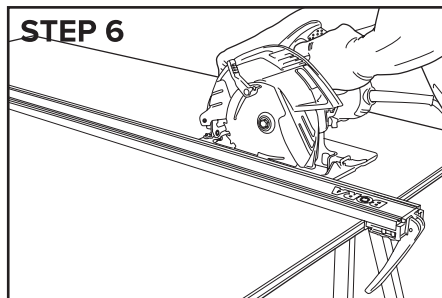
Now hold the clamp head between thumb and index finger as shown and push toward the material. Once this is in place you are ready to clamp.

STEP 5



With both guide heads in place, push the clamp handle down. This will push the clamp head closest to you toward the head you placed in Step 4.

STEP 6



Check that the clamp is in the correct place and secure to do work. If adjustments need to be made repeat steps 3 to 5. Only cut when you are satisfied the clamp is in the correct position and you are ready to work.

Questions?



Wait! Don't return product to store.

Give us a call first. 866-588-0395

or email us at info@affinitytool.com

Visit
www.boratool.com/service-support/warranty-registration

or scan the code with your smart phone's QR Code reader:



Follow ALL Power Tool Safety Regulations Before Performing Cutting Operations.

WWW.BORATOOL.COM

©2018